



On behalf of Serving Communities on Poverty Eradication (SCOPE), it is indeed my privilege to present this annual report of SCOPE ending March 31, 2021. Despite COVID -19 pandemic, SCOPE team remained committed to provide comprehensive education, health care, rehabilitation and emergency relief to underprivileged communities in Balangir district.

The Indian government's mandated COVID -19 pandemic lockdown measures brought loss of livelihoods and adversities for millions of informal and low-wage migrant workers. SCOPE team worked directly with the marginalized communities, providing access to health by mobile health van, food, masks, sanitizers and personal COVID safety information to over 7,000 underprivileged families in the communities of Balangir and Deogaon Block of Balangir district.

SCOPE team invites you to visit the SCOPE project sites and volunteer your time in the service of the poorest of the poor. We look forward to your insights, expertise, and constructive feedback to improve our community activities and programs.

Thanking you

Sincerely Yours

Adv. Kshirod Chandra Nag

Chairperson

The past year has been a period of one of the greatest challenges the world has ever faced. It may be a time to fight, a time to question, a time to mourn, but there is always one thing we can hold on to: hope. How shall I thank the many SCOPE friends who have supported us during these hardest of times, even while you yourselves are going through so much uncertainty and are hurting? The SCOPE family is thinking of you all and remembering you in our prayers during these unprecedented and deeply uncertain circumstances. I can imagine that many of you are suffering different kinds of hardships. We empathize with you and hold you in our thoughts every day.

The effects of COVID-19 have been devastating in our communities. Most residents are daily wage earners, earning daily and spending daily. They are too poor to have any savings. The Prime Minister of India announced a complete national lockdown from midnight of March 24, 2020. This sent our communities into economic and financial shock. The police patrols were severe, and residents were beaten if they dared to step out of their homes.

Social distancing was impossible with 6 to 7 people living in one room of about 50 to 60 square feet. There was no money to buy soap to wash hands. The public toilet blocks became filthy because the sanitation workers stopped coming for fear of COVID-19. There was garbage everywhere and a terrible stench in the air. The sense of despair was everywhere. The little kids were frightened. All schools were closed. Public transport was shut down, so our office had to be shut down as well.

As the situation evolved, I saw that all the food containers in the homes were empty. No one had food. No one had money. The very poor had not a single rupee. The government began distributing rice and lentils at various locations in the city. People had to stand in a long line and wait for hours before they could get a bowl of rice and lentils. The elderly, the disabled, women with little children would get crushed in the massive crowds that fell upon the food as soon as it arrived.

The SCOPE Warriors also visited every home and offered emotional support, aside from all the public health and cash assistance. People were extremely lonely, anxious, frightened, and uncertain about their future, as all of them had started to run out of funds. The SCOPE Warriors also worked alongside the police and government elected officials to maintain peace and order in all the communities.

SCOPE is continuing to provide grocery bags as much as possible and is running special clinics for vulnerable groups. Treatment for non-Covid illnesses is extremely hard to access for the poor because the Covid-19 crisis has absorbed the already stretched resources of the public health services. Routine immunizations have been discontinued, and the risk of the return of vaccine-preventable childhood illnesses is high. Where will they go? Together, we have shown tenderness towards their fears and anguish, consistency in their insecurity, and have never abandoned them, never been too busy for them.

Thank you for always lending us your support in times of crisis such as this. We are thinking of each one of you, and pray that you will stay safe and well.

Warm regards,

Dhirya Nag, General Secretary

About SCOPE...



Serving Communities of Poverty Eradication (SCOPE) is a non-government and not-for-profit organisation established in 1996, working to improve the quality of lives of tribal, rural and urban marginalised communities in Odisha, with a primary focus to eradicate extreme poverty and hunger, ensuring social inclusion and justice, good governance and citizen's right., which works to alleviate poverty through a unique integrated community development approach. We started out by providing education to eliminate child labour. Over a period of time, we expanded our interventions to address the multidimensional facets of poverty

Vision

A poverty free world where all people access social justice and live in dignity

Mission

Build inclusive resilient communities that value and empower all marginalized groups who live in poverty

Our Values

- Stewardship
- Inclusion
- Integrity
- Accountability
- Partnerships

REGISTRATION

SCOPE is registered as an Indian Not for Profit Society since 1996 (Registration No. 11686/4 of 1996).

TAX EXEMPTION

All Donation to SCOPE are exempted U/s 80G (income tax Act 1961): 50 % tax exemption.

LEGAL STATUS

Society Registration Number
FCRA Number
80G (Tax Exemption)
PAN (Permanent Account Number)
12A Registration Number (Tax Exemption)
NGO Darpan Unique Id

DETAILS

11686/4 of 2003
231661736
DIT (E) 2007-2008/B-1041/04/2382
AABTB0175G
DIT (E)/2004-2005/B-1041/04/739
DL/2016/0105356



Programme Highlights 2021

COVID-19 Emergency Response

When the COVID-19 pandemic struck India in March 2020, the government immediately declared a national lockdown to curb the spread of the virus. Everything was shut down overnight. This had an immediate catastrophic impact on those living in the slums. The poorest of the poor, these people were mostly dependent on daily wages and other temporary jobs to survive. They lost their income with no warning: no work in the community meant no money and the possibility of starvation. Within days, people from the slums started migrating to their native villages as a means for survival through the biggest health crisis of the century. The migration had other effects such as mental stress in the slum dwellers who decided to stay on. How would they survive? If they decided to go away, they faced an uncertain future.

The communities were at higher risk because they were unable to maintain social distancing. The living conditions and infrastructure in the rural made them vulnerable to a large-scale community outbreak of the disease. These densely populated locations had very poor Water, Sanitation and Hygiene (WASH) facilities and there was no or poor awareness on behavioral practices to lessen their exposure to COVID-19. Hesitancy to wear masks and wash hands frequently was rampant. One can easily imagine the situation regarding health, hygiene, social distancing, and other basic precautions needed to prevent the spread of the virus.

The pandemic also put severe strain on the medical infrastructure of the city. The poor and vulnerable patients from the slums had no access to healthcare as public hospitals, healthcare centers, and dispensaries were closed as there was no manpower to operate them. The large hospitals were turned into special covid centers and OPD for general patients were not functioning. Most of the private hospitals, nursing homes and healthcare centers were either closed or functioning with minimal infrastructure and manpower, which exacerbated the crisis.



SCOPE's Strategy

Immediately after the declaration of lockdown by the government, SCOPE, under the guidance of its General Secretary, designed an emergency strategic plan of action for awareness and protection against COVID-19 for implementation across its project locations.

SCOPE formed a dedicated team of volunteers: high school and college students from the slum communities were trained, counselled, and prepared to work in the community as Corona Warriors. The task was difficult initially, as the parents and family members were reluctant to let their children visit the communities amidst the pandemic. However, the SCOPE team explained to them that the young people were less prone with all the precautions in place. They reassured them about their safety, and were able to get their consent. They were also provided with good quality PPE for their protection and given training on covid appropriate behavior while working in the community. Within two days, a dedicated team of 30 Corona Warriors were ready and working on the ground. The SCOPE team continuously counselled the families to stay put.



The SCOPE team knew they had to respond immediately to stave off a humanitarian disaster. Based on existing relationships and goodwill, they developed supply chains to obtain and distribute essential survival items and medicines. The team in each community prepared a list of key beneficiaries for priority intervention: families who had lost their income, the elderly, widows, pregnant women, children under-5, and people with disabilities. SCOPE activated its donor support locally in kind to generate the necessary resources for this extensive emergency programme.

Promotion of social distancing and Hand wash

SCOPE's team continuously engaged in awareness drive – making the community aware about COVID 19, mask wearing, social distancing and hand washing. The team are also following up with local ANM, ASHA and AWW to ensure immunization and other services of AWC is access by the community people. It is found that Village Health Nutrition Day (VHND) is regularly conducted as per the pre-decided schedules. HWM (Height, weight and MAUC) measurement



is being done, health check-up of pregnant mothers, iron and folic tab supply is being done keeping social distance in mind.

The SCOPE team immediately started spreading urgent covid related messages in the communities. People were told to stay at home, wear masks, maintain social distancing, and adopt regular handwashing to ensure their own as well as their family's safety. Initially, there was some resistance when the team conducted home visits, but soon, the community realized that these were essential safety measures



and SCOPE was their only friend in the crisis. The people were counselled not to panic and leave their homes, as this would accentuate the crisis. The team convinced them that SCOPE would support them and the worst period would soon be over. The community was educated regarding Covid appropriate behavior and risk reduction

measures, and masks were repeatedly distributed free of charge.

Home Based Education during Covid-19

Recognizing that education is a pathway out of poverty, SCOPE have made significant progress in increasing access to learning in communities in Balangir district. Covid pandemic is threatening to erase many of those gains. All the children, especially who are studying in government schools have been impacted by temporary school closures.

SCOPE developed strategy to provide homebased education to more than 100 children in the communities through its self-learning programme. To make up for the lack of sufficient and adequate educational spaces, one result of a decades of crisis, community members in the project locations volunteered to open their homes to children to receive the education. Volunteered homes-based learning points compliment the work of existing community learning centres. With the help of



volunteer community members, the self-learning initiative supports out of school children to fill their learning gaps and catch up with their peers.



Provision of masks, gloves, sanitizers etc. to village frontline workers

SCOPE's team distributed sanitizer, masks and gloves to volunteers, Anganwadi workers, ASHA, teachers, cooperative leaders, and village panchayat workers.

Provision of Ration kits for 8,000 needy families in the villages

The start of the pandemic and immediate declaration of lockdown had a huge financial impact on the lives of the SCOPE slum communities as most people lost their jobs and income. Moreover, slum dwellers could not access the government ration shops as there was a huge rush and supply was limited.



The elderly, widows, people with disabilities, and other vulnerable groups faced severe problems as they could not move out of their house because of the pandemic and arrange for life's necessities.

The crisis was so huge that most families were on the brink of starvation. SCOPE mobilised groceries from the local rich families and put together packs consisting of cereals, pulses, cooking oil, tea, soap and other essential items and distributed them to every home, to get them through the crisis. Along with emergency food supplies.

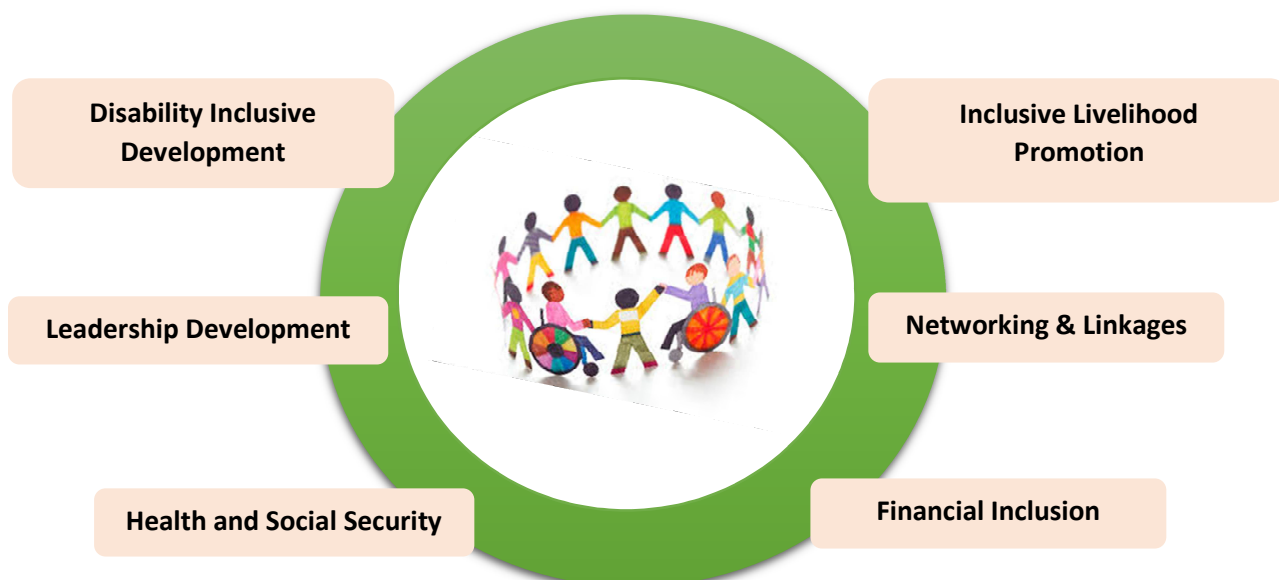


The SCOPE team visited every home in the community and ensured that the emergency supplies reached each and every family. In addition, they helped the community residents to register for the government welfare schemes through an online registration process.

SCOPE's Inclusive Approach

SCOPE's currently works under the six integrated themes to address the lifecycle needs of the communities to secure their well-being and help them progress steadily. SCOPE realizes that while economic growth tends to be the foremost goal of the marginalised, a steady behavioral change in the community can only be achieved by working with them on all parameters of their occupation and life from health to education to social security.

SCOPE and its supporters are united in building the strength of communities through a focus on these thematic areas: organizing and advocacy, capacity building, livelihood promotion and protection, social security and health, and skills development. Each of these thematic areas rests on ensuring dignity and respect in the communities as well as pushing societal boundaries towards gender equality in all spheres of life.



1.1 Inclusive Livelihood Promotion

SCOPE has been consistently working towards organizing women in the informal economy into various types of social enterprises, as part of its twin approach of struggle and development. Self-help groups (SHGs) and SHG federations were formed and more recently SCOPE has helped to established diversified enterprises. These social enterprises are aims to bring about economic empowerment of women through a dual strategy of mobilizing for rights and forming social enterprises, set up an ecosystem for the enterprises to thrive and study the impact, over a period of five years.

1.1.1 Inclusive Livelihood Promotion through plantation

Most of the project villages have fallow/ cultivable waste land, which were earlier under cultivation to grow staple crops. During the course of time, because of migration and other reasons, the cultivable area is shrinking near by the habitats and the areas outskirts of villages are now converting into waste land. In most villages we can see this change in arable lands.

Community was motivated to plant fruit trees in cluster areas which are presently not in any use. It was ensured that this activity not less than in 2 hectare land so that maximum number of families would be



benefitted by this activity. In a cluster plantation, it would be easy to impart different input, techniques, post plantation care, gap filling and training and pruning activities. This type of activity would help to stop converting arable land to waste land, this also encourage a shift to more labor heavy to less laborious crop and also a shift from subsistence to commercial agriculture. Potential fruit crops planted this year were Mango, Pomegranate and Lemon.

1.2 Networking and Linkages

Due to social constraints and job insecurities, women and men are often hesitant to be part of a group where they must voice their opinions against unfair practices work practices such low wages and exploitative middlemen; terrible living conditions of no water, toilets or electricity; access to health, children education, social challenges and fear of sexual violence on them and their daughters. SCOPE provides a community-based platform through which such issues are identified

and discussed while simultaneously empowering women with the confidence to know their rights and cultivate their independence to find solutions to these concerns. SCOPE runs community programs and interacts with community members through physical space in each villages, community are provided with comprehensive assistance in accessing public entitlements. The SCOPE facilitate awareness sessions on health and legal along with counseling through experts.

1.3 Financial Inclusion

SCOPE promotes entrepreneurship and small producers in their own right. It has been witnessed that while poor do most of the work, their financial knowledge is often not adequate enough to manage their money effectively in terms of savings and spending it as investment to expand their work. Often, they end up relying on moneylenders are exploited for their wages and loan interest. In order to protect and grow their' s assets, SCOPE support them for financial planning and saving services in the local bank. SCOPE promote diversified models and activities to promote financial inclusion of our individual members.

Women in the community form an SHG of 10-20 women from a similar occupation, residency, or economic condition. SCOPE mobilizers introduce members to the concept of the SHG which includes internal savings, loans, and repayment. The mobilizers build the capacity of SHG leaders so that they are able to manage the SHG independently. The SHG will then open a single collectively-owned bank account in nationalized banks to access additional funding from banks through cash credit linkages.

1.4 Health and Social Security

Social, cultural and political constraints often inhibit poor from addressing their health and social security concerns. This in turn can hinder their growth as citizens of a larger society. Failure to access identity cards and benefits by the government disparages their status as workers. SCOPE, as a grassroots organisation working with disadvantage communities over 2 decades, firmly established networking and linkages with government programmes and institutions ensuring the development of communities by providing them and their families social security and access to affordable and quality health resources. While the state and central level governments have launched a myriad of welfare and social security schemes to empower marginalized individuals and groups, there are several critical gaps in the effective delivery of these services to the intended beneficiaries. Low awareness of welfare programs, uncertainty regarding access procedures, required documentation, and weak grievance redressal systems are just some of the roadblocks that confound even the most well intended schemes.

1.5 Leadership Development

SCOPE identifies, quantifies, and measures potential areas of intervention that impair vulnerable people from achieving full economic, social, and societal participation. SCOPE, working with local teams and leaders then develops a

targeted approach to tackling these issues through livelihood, health, advocacy, and other initiatives. SCOPE invests in the leadership and sustainability of the communities to raise issues towards access to their rights and entitlements by linkages with government programmes and discussion with relevant government officials.

1.6 Disability Inclusive Development

Disability is a multi-dimensional development and human rights issue. Persons with disabilities are one of the largest minority groups in India, estimated to represent over 2.21 per cent (approximately 2.68 Cr people) of the total population. 69% persons with disabilities resides in rural areas while the remaining 31% resided in urban areas.

Disability inclusion is instrumental to the Sustainable Development Goals and its central pledge to leave no one behind and to reach the furthest behind first. This is a matter of equal opportunity, inclusion, justice and economic growth. We know that the costs of exclusion are too high. The RPWD Act was enacted in December 2016. It promotes and protects the rights and dignity of people with disabilities in various aspects of life – educational, social, legal, economic, cultural and political. It applies to government, non-government and private organisations.

This was a watershed moment for the rights of persons with disabilities as it represented a marked shift from a medical and charity model of disability to the social and human rights-based model, and its guiding principles including non-discrimination, participation and inclusion, equality of opportunity, respect and dignity and the respect for diversity.

SCOPE has a clear mandate to advance the core principles of the RPD Act 2016 and support disability inclusive development. The RPD Act 2016 and the Sustainable Development Goals, which are mutually inclusive. The SCOPE's programme incorporates a reflection on comparative advantage and the diversity and depth of interventions undertaken by SCOPE which is a testimony to the organization's efforts in supporting disability inclusive development across, both as a means in itself and a catalyst for sustainable human development and as we strive to fulfil the bold promises we have made to achieve the world envisioned in the 2030 Agenda.

Celebration of Independence Day

Independence Day was celebrated with great enthusiasm and patriotic fervour on 15th August, 2020 with the staff, students, parents and communities members. . On this special occasion, the programme started with flag hoisting by the Mr. Kshirod Chandra Nag, President, SCOPE and he also addressed the gathering appealing to their nationalistic spirit and urging them to take pride in being an Indian and fulfilling one's duty with responsibility. He also emphasized the role of youth today as the true wealth of a country. It was a day of joy, a day to love and respect our country and make it a better place for Indians to live and experience the freedom, peace and unity in diversity.



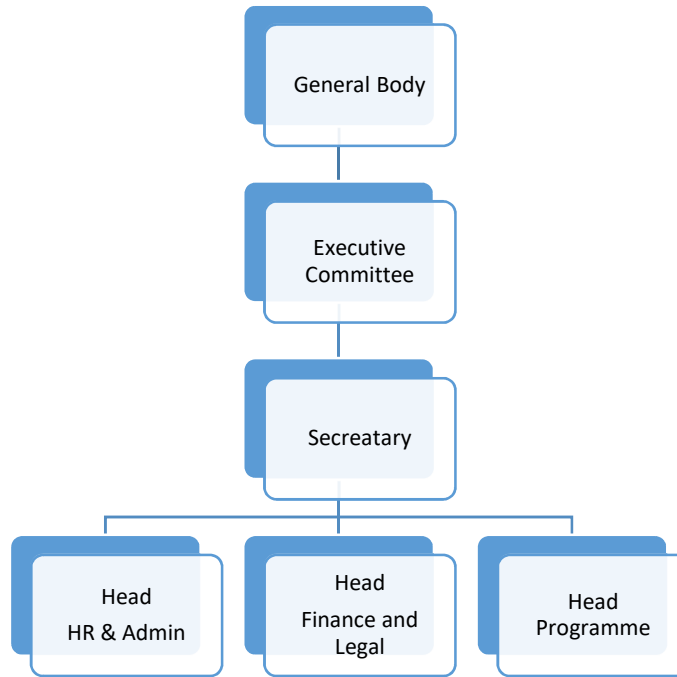
List of the Executive Committee Members

Name of the members	Male/Female	Designation
Mr. Kshirod Chandra Nag	Male	Chairman
Mr. Nithaniel Barik	Male	Vice- Chairman
Mr. Dhiryra Nag	Male	General Secretary
Mr. Anirudha Patra	Male	Treasurer
Ms. Surabhi Nanda	Female	Member
Mr. Debasis Kumar Singh	Male	Member
Mr. Sumanta Kumar Bag	Male	Member

List of the Governing Body Members

Name of the members	Male/Female	Designation
Mr. Kshirod Chandra Nag	Male	Chairman
Mr. Nithaniel Barik	Male	Vice- Chairman
Mr. Dhiryra Nag	Male	General Secretary
Mr. Anirudha Patra	Male	Treasurer
Ms. Surabhi Nanda	Female	Member
Mr. Debasis Kumar Singh	Male	Member
Mr. Sumanta Kumar Bag	Male	Member

Organisation Structure



Statements of Financial Position

SERVING COMMUNITY ON POVERTY ERADICATION (SCOPE)

Jay Durga Nagar, Near Saraswati Sishu Mandir,
P.O/Via- Rajendra College, Dist. Bolangir (Odisha)

CONSOLIDATED RECEIPT & PAYMENTS ACCOUNT FOR THE PERIOD FROM 01.04.2020 TO 31.03.2021.

RECEIPTS	AMOUNT (Rs.)	PAYMENTS.	AMOUNT (Rs.)
To <u>OPENING BALANCE</u>		By Bank charges	483.80
As per Schedule-A	30,242.61	By Audit & consultancy	4,425.00
To Donation & Contributions	1,05,634.00	By Contingencies	1,050.00
To Bank interest	789.00	By Repair & maintenance	2,156.00
		By Printing & stationery	5,250.00
		By Awareness programme	4,236.00
		By SHGs training	16,897.00
		By Independence Day Celebration	2,150.00
		By Nursery raising	8,725.00
		By Covid-19 awareness programme	9,560.00
		By Mask & sanitizer distribution	16,150.00
		By Covid-19 relief programme	22,890.00
		By <u>CLOSING BALANCE</u>	
		As per Schedule-B	42,692.81
	1,36,665.61		1,36,665.61

AUDITOR'S REPORT

AS PER OUR SEPARATE REPORT OF EVEN DATE ATTACHED.

For NARENDRA K. JAIN & ASSOCIATES,
Chartered Accountants.
Firm Regd. No: 322048E

PLACE : BALANGIR
Date : 10.08.2021
UDIN : 21085121AAAAEJ9765



(CA N.K. JAIN)
Partner
Membership No. 085121